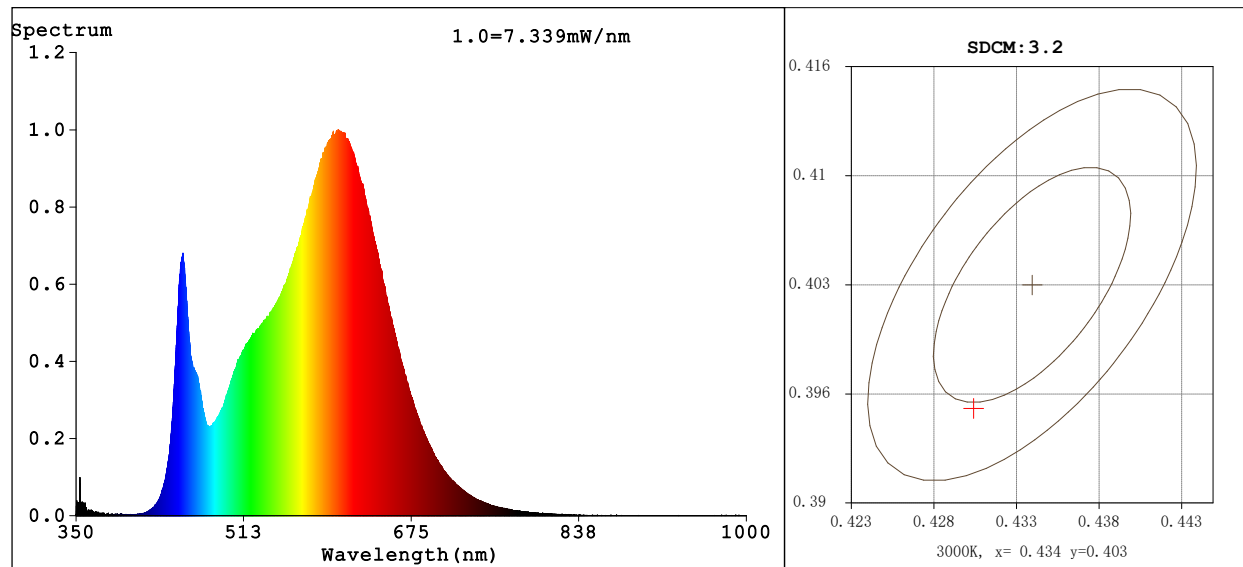


## Spectrum Test Report



## Color Parameters:

Chromaticity Coordinate:  $x=0.4303$   $y=0.3955$   $u'=0.2500$   $v'=0.5170$   
CCT=3044K (Duv=-0.0025) Dominant WL:Ld =583.6nm WL:Lc = --nm Purity=47.9%  
Ratio:R=23.2% G=73.8% B=3.0% Peak WL:Lp=604.3nm FWHM=125.7nm  
Render Index:Ra=84.6 AvgR=80.0 TM30:Rf=85 Rg=96

R1 =85 R2 =95 R3 =93 R4 =82 R5 =85 R6 =93 R7 =82  
R8 =61 R9 =15 R10=88 R11=83 R12=76 R13=88 R14=97 R15=77

## Photo Parameters:

Flux = 354.9 lm Eff. : 343899456.00 lm/W Fe = 1.102 W

## Electrical parameters:

V = 1.3110 V I = 0.0000453 A P = 0.0000010 W PF = 0.01736

LEVEL:OUT WHITE:ANSI\_3000K

Status: Integral T = 900 ms Ip = 51568 (79%)

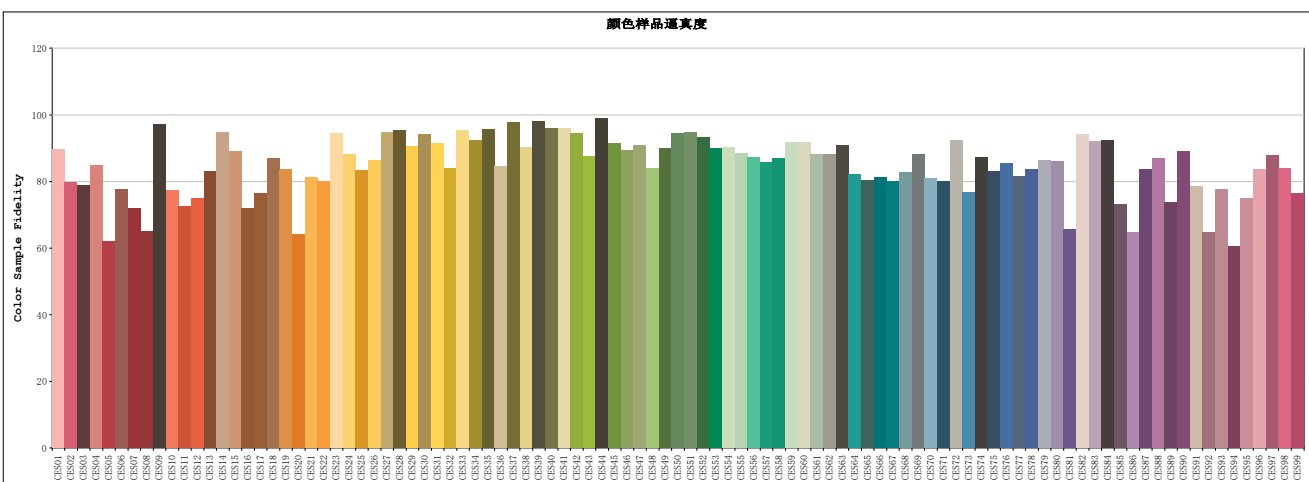
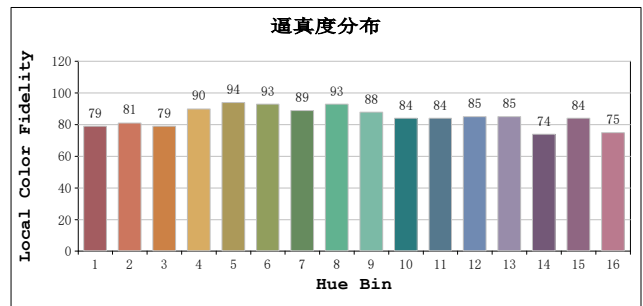
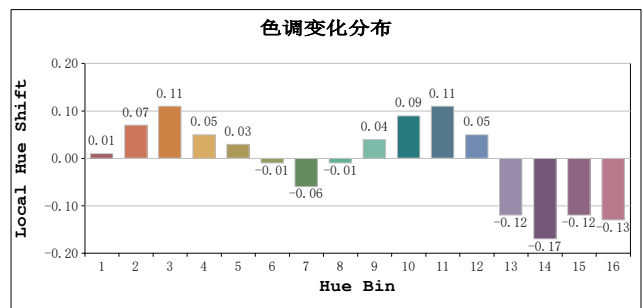
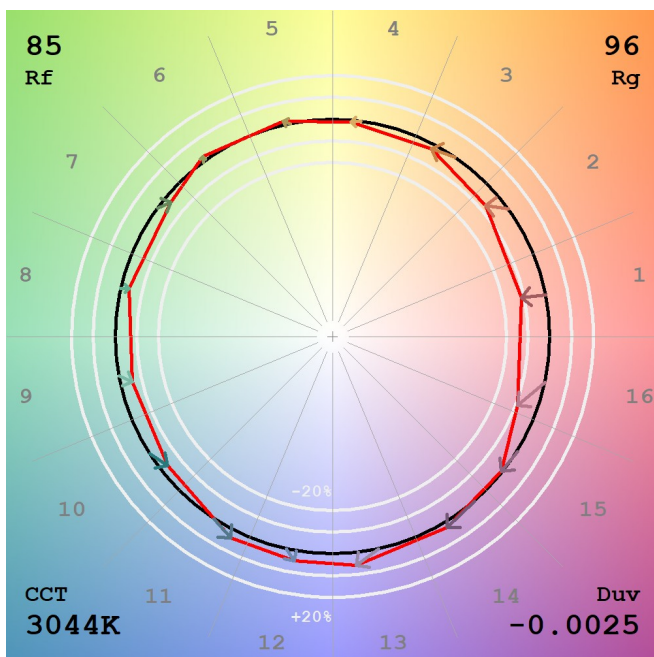
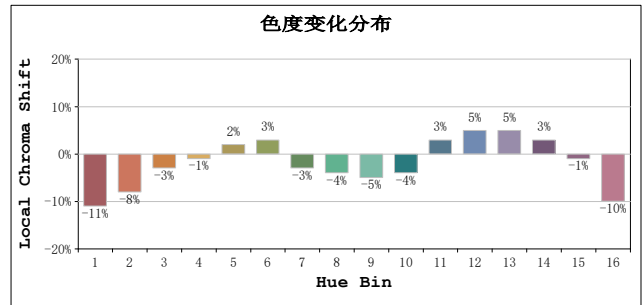
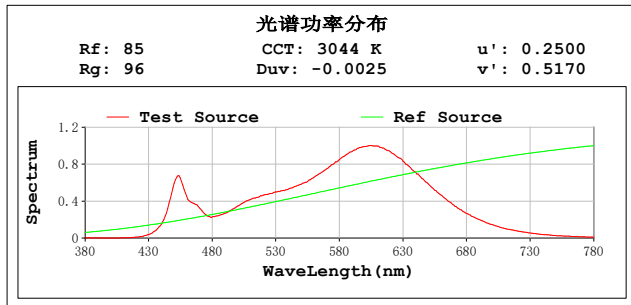
GBT5702

Model:1  
Tester:11  
Temperature:25.3Deg  
Manufacturer:

Number:308  
Date:2025-11-27 09:30:45  
Humidity:65.0%  
Remarks:1

## TM30

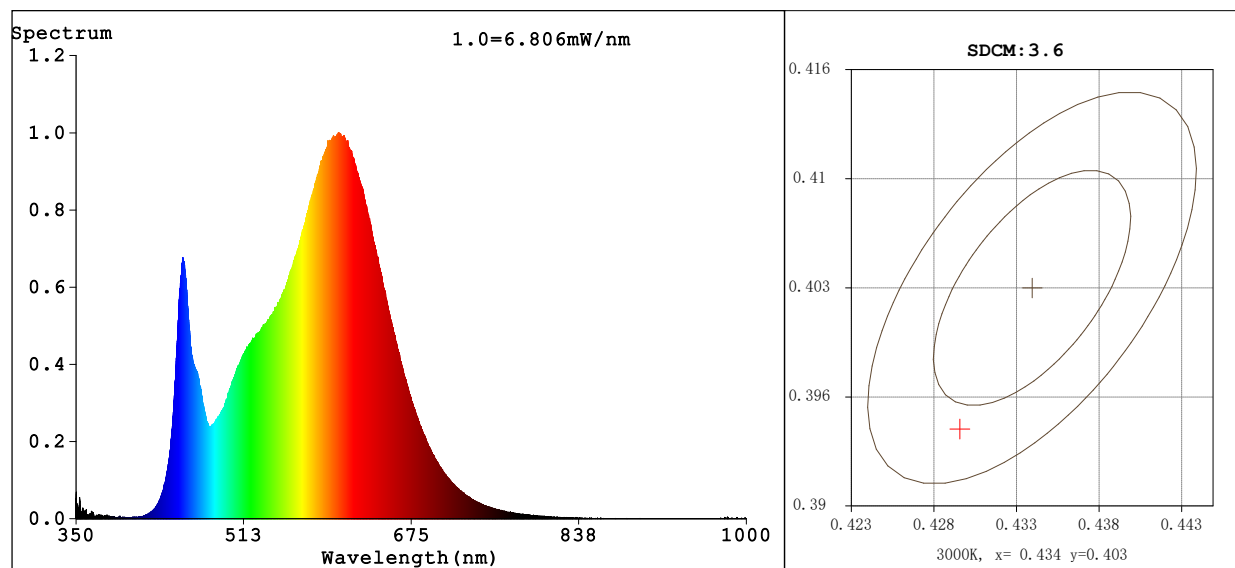
视场角:2 度



Model:1  
Tester:11  
Temperature:25.3Deg  
Manufacturer:

Number:308  
Date:2025-11-27 09:30:45  
Humidity:65.0%  
Remarks:1

## Spectrum Test Report



## Color Parameters:

Chromaticity Coordinate:  $x=0.4294$   $y=0.3945$   $u'=0.2499$   $v'=0.5164$   
CCT=3051K (Duv=-0.0028) Dominant WL:Ld =583.7nm WL:Lc = --nm Purity=47.3%  
Ratio:R=23.1% G=73.8% B=3.1% Peak WL:Lp=604.9nm FWHM=125.1nm  
Render Index:Ra=84.4 AvgR=79.9 TM30:Rf=85 Rg=96

R1 =85 R2 =95 R3 =93 R4 =82 R5 =85 R6 =94 R7 =81  
R8 =61 R9 =15 R10=89 R11=82 R12=76 R13=88 R14=97 R15=77

## Photo Parameters:

Flux = 328.7 lm Eff. : 372375744.00 lm/W Fe = 1.023 W

## Electrical parameters:

V = 1.3144 V I = 0.0000451 A P = 0.0000009 W PF = 0.01488

LEVEL:OUT WHITE:ANSI\_3000K

Status: Integral T = 900 ms Ip = 47791 (73%)

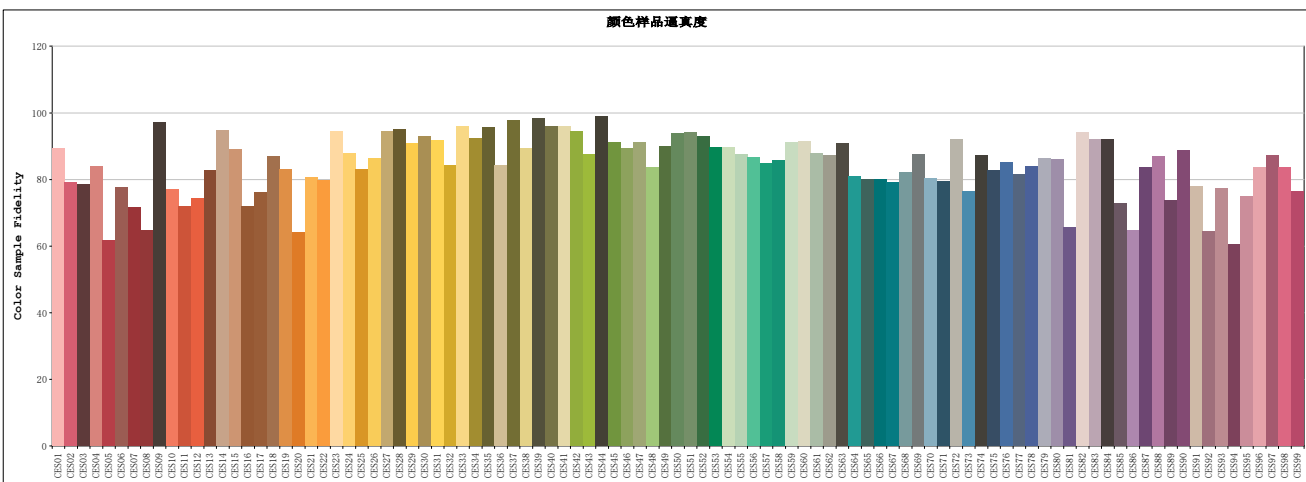
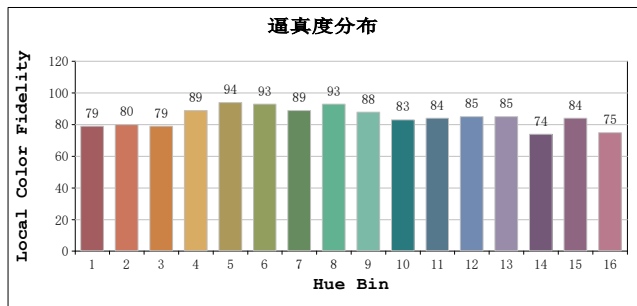
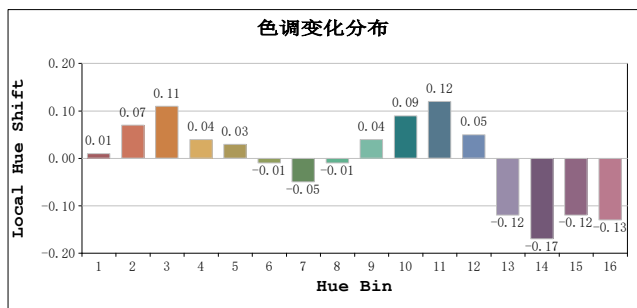
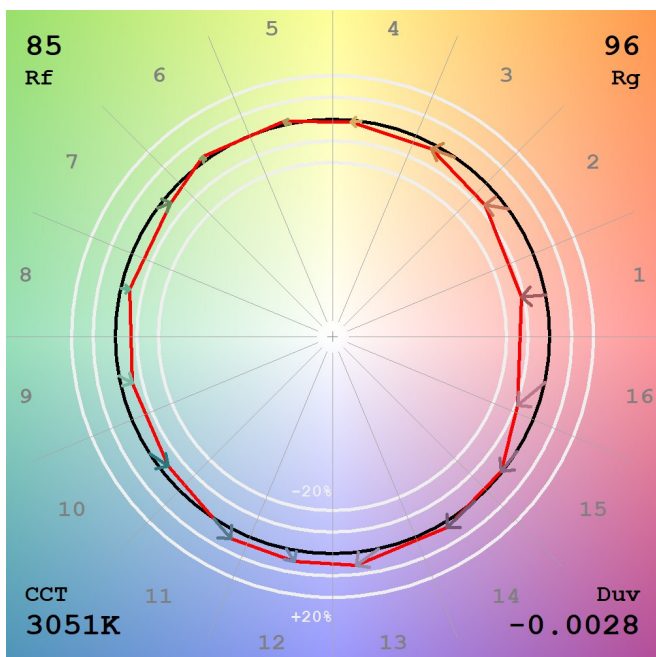
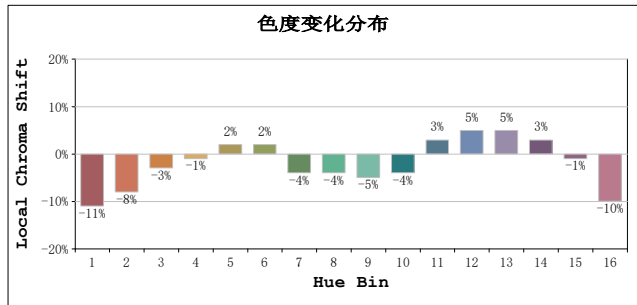
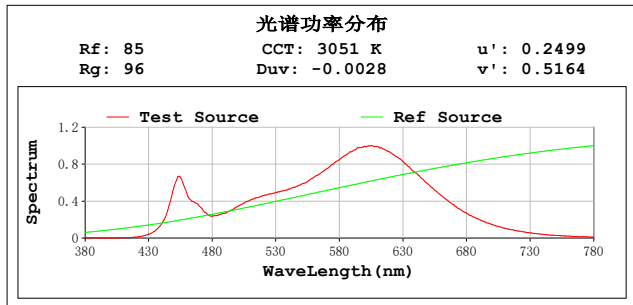
GBT5702

Model:1  
Tester:11  
Temperature:25.3Deg  
Manufacturer:

Number:309  
Date:2025-11-27 09:35:55  
Humidity:65.0%  
Remarks:1

## TM30

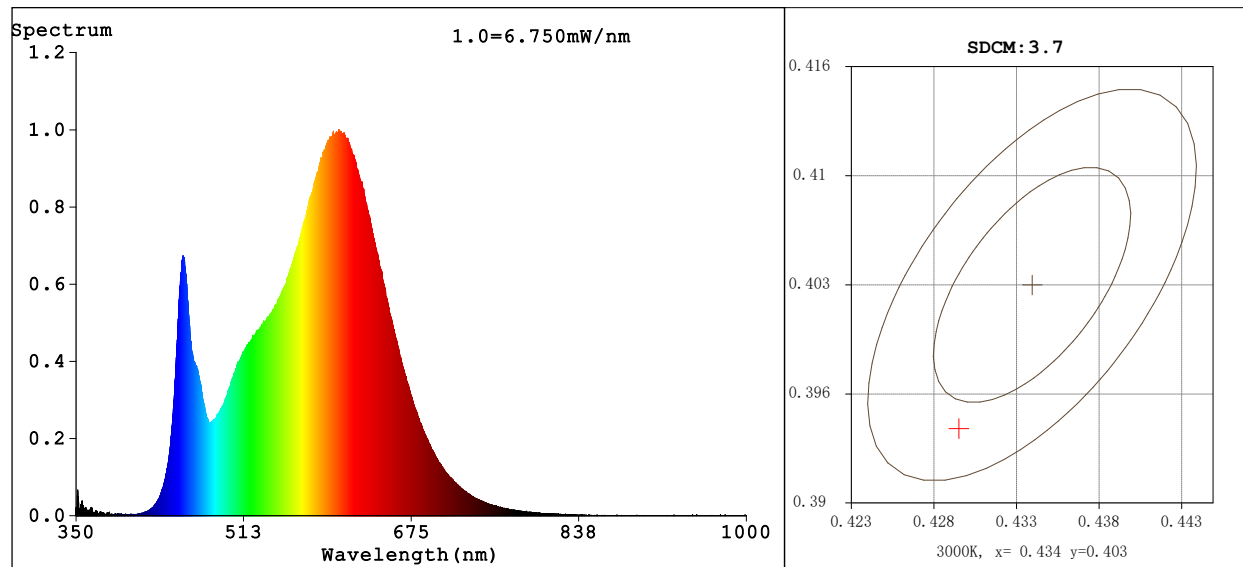
视场角:2 度



Model:1  
Tester:11  
Temperature:25.3Deg  
Manufacturer:

Number:309  
Date:2025-11-27 09:35:55  
Humidity:65.0%  
Remarks:1

## Spectrum Test Report



## Color Parameters:

Chromaticity Coordinate:  $x=0.4294$   $y=0.3943$   $u'=0.2499$   $v'=0.5163$   
CCT=3050K (Duv=-0.0029) Dominant WL:Ld =583.7nm WL:Lc = --nm Purity=47.2%  
Ratio:R=23.1% G=73.7% B=3.1% Peak WL:Lp=604.9nm FWHM=125.3nm  
Render Index:Ra=84.4 AvgR=79.8 TM30:Rf=85 Rg=96

R1 =84 R2 =95 R3 =93 R4 =82 R5 =85 R6 =94 R7 =81  
R8 =61 R9 =15 R10=89 R11=82 R12=76 R13=88 R14=97 R15=77

## Photo Parameters:

Flux = 326.6 lm Eff. : 654313408.00 lm/W Fe = 1.017 W

## Electrical parameters:

V = 1.3122 V I = 0.0000464 A P = 0.0000005 W PF = 0.008193

LEVEL:OUT WHITE:ANSI\_3000K

Status: Integral T = 900 ms Ip = 47627 (73%)

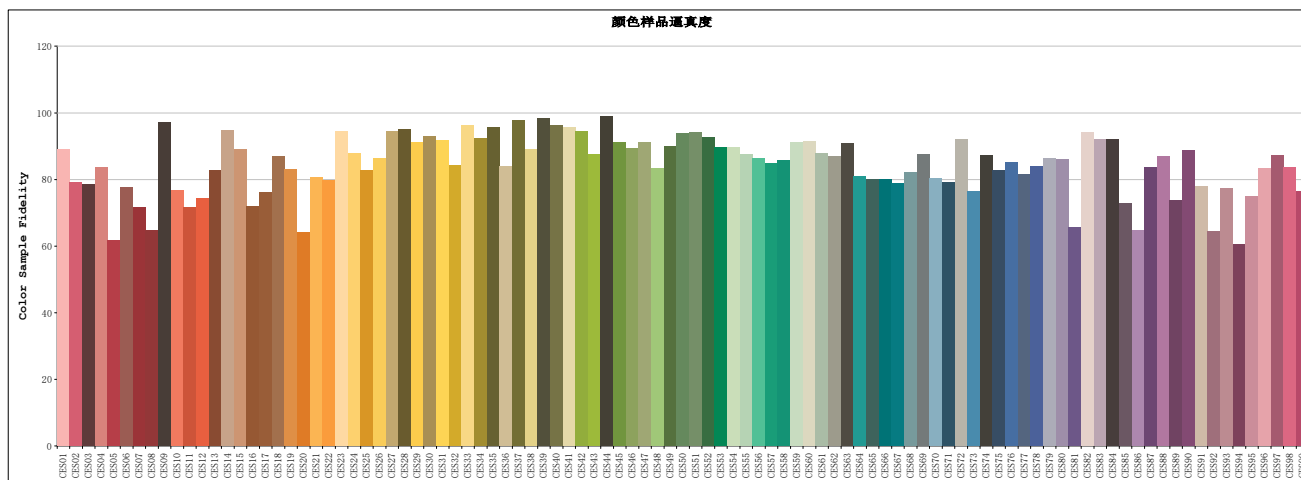
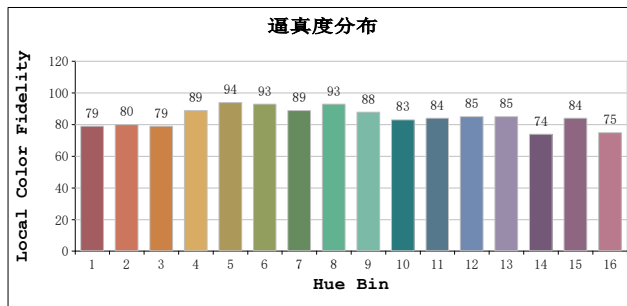
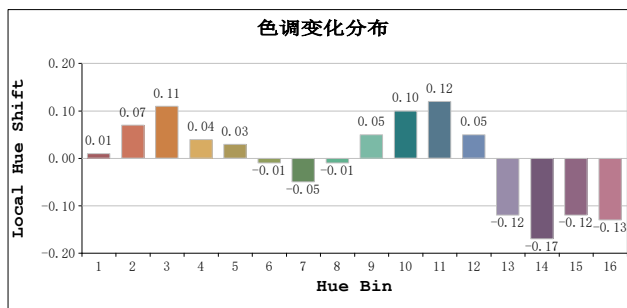
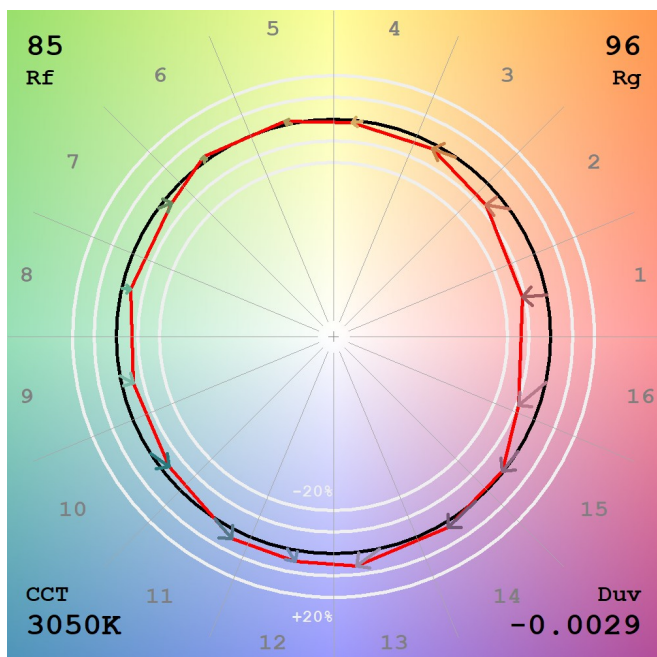
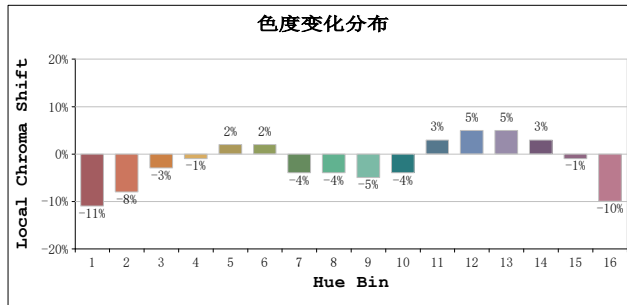
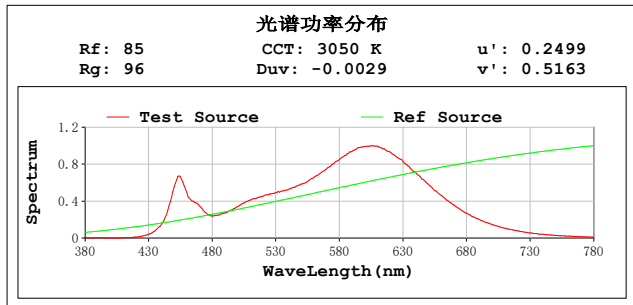
GBT5702

Model:1  
Tester:11  
Temperature:25.3Deg  
Manufacturer:

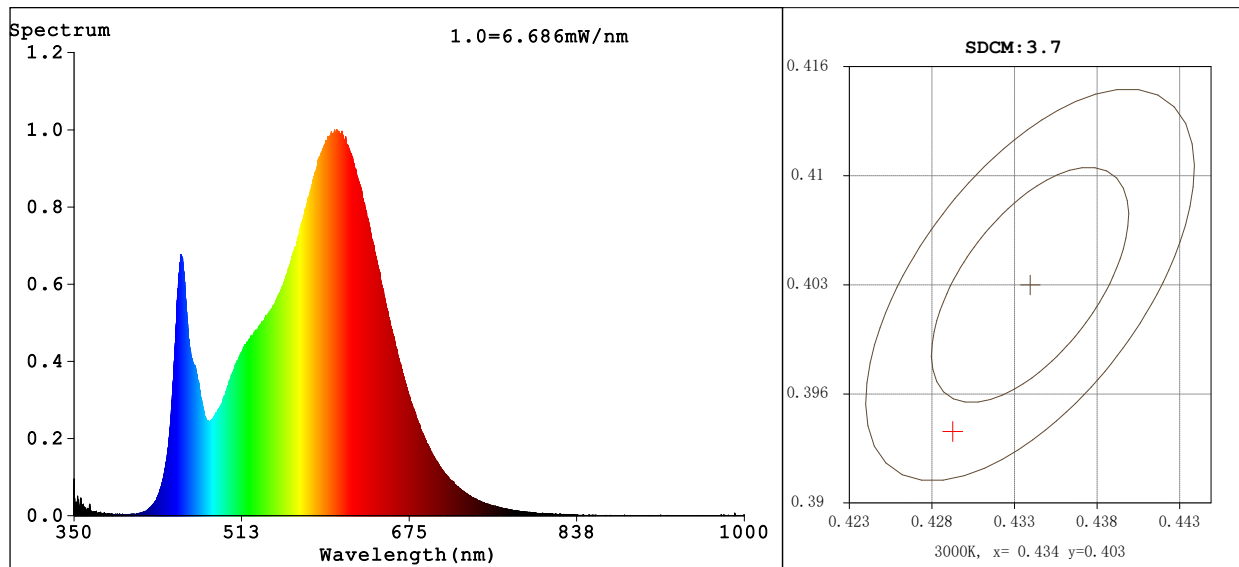
Number:310  
Date:2025-11-27 09:37:24  
Humidity:65.0%  
Remarks:1

## TM30

视场角:2 度



## Spectrum Test Report



## Color Parameters:

Chromaticity Coordinate:  $x=0.4291$   $y=0.3941$  /  $u'=0.2498$   $v'=0.5162$   
CCT=3053K (Duv=-0.0029) Dominant WL:Ld =583.7nm WL:Lc = --nm Purity=47.1%  
Ratio:R=23.1% G=73.7% B=3.1% Peak WL:Lp=604.9nm FWHM=125.1nm  
Render Index:Ra=84.3 AvgR=79.8 TM30:Rf=85 Rg=96

R1 =85 R2 =95 R3 =93 R4 =82 R5 =85 R6 =94 R7 =81  
R8 =61 R9 =15 R10=89 R11=82 R12=76 R13=88 R14=97 R15=77

## Photo Parameters:

Flux = 323.0 lm Eff. : 293523552.00 lm/W Fe = 1.007 W

## Electrical parameters:

V = 1.3070 V I = 0.0000461 A P = 0.0000011 W PF = 0.01827

LEVEL:OUT WHITE:ANSI\_3000K

Status: Integral T = 900 ms Ip = 46762 (71%)

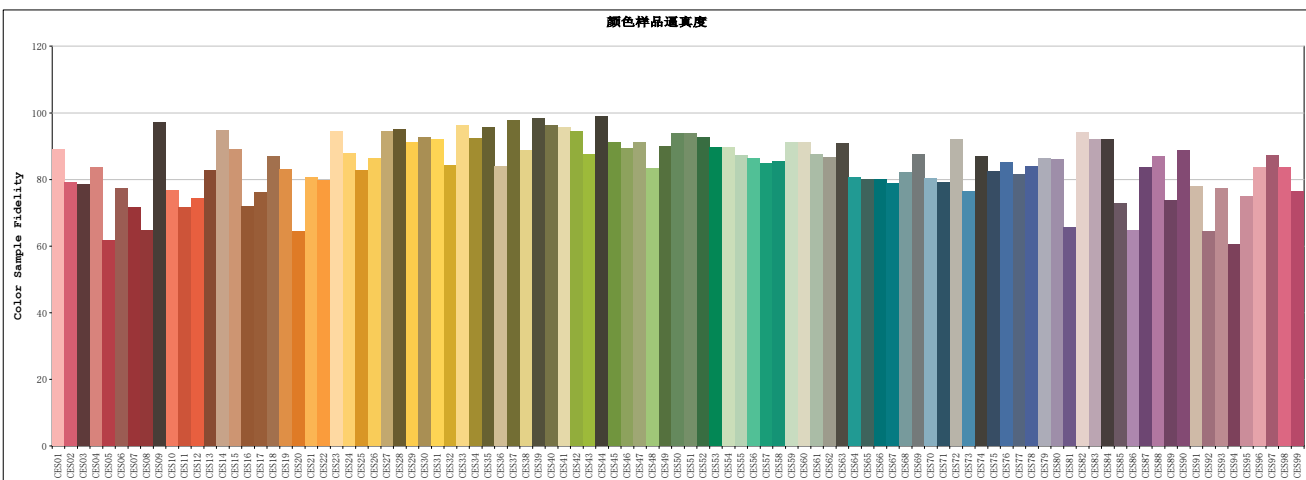
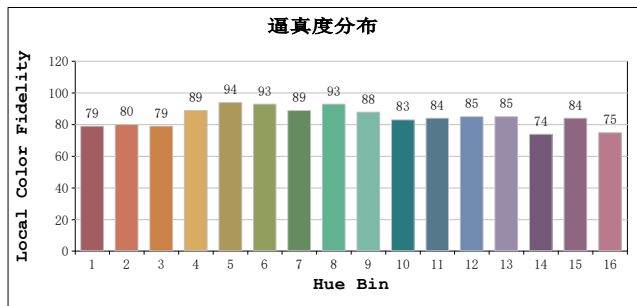
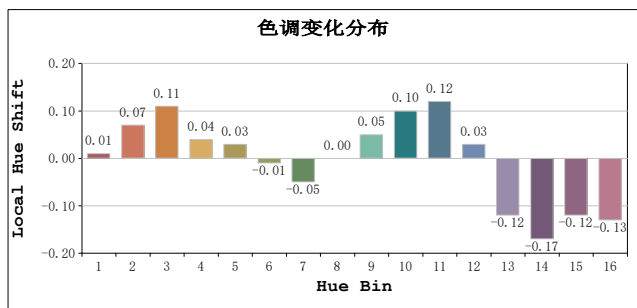
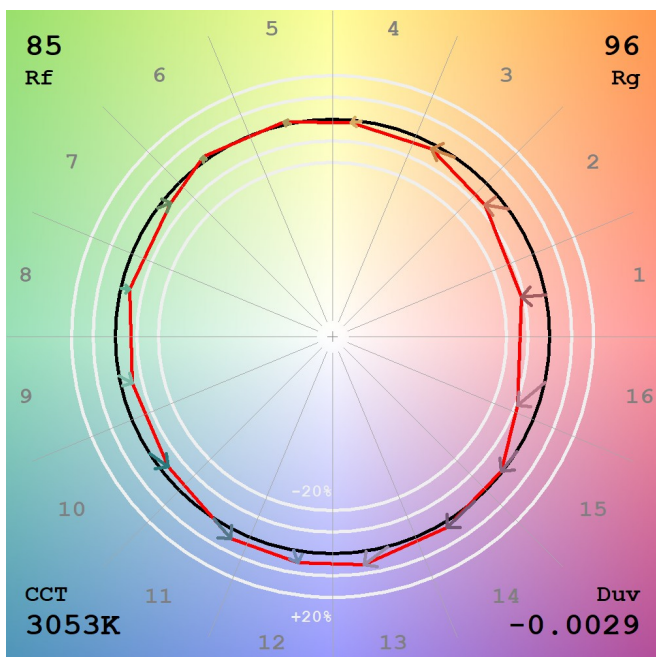
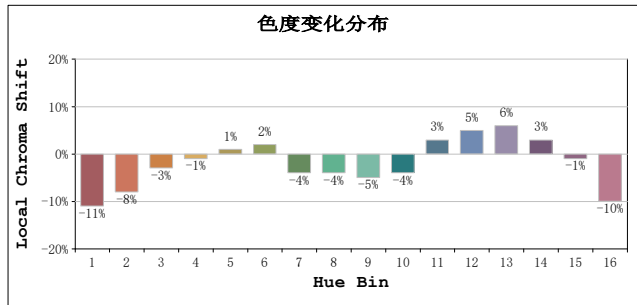
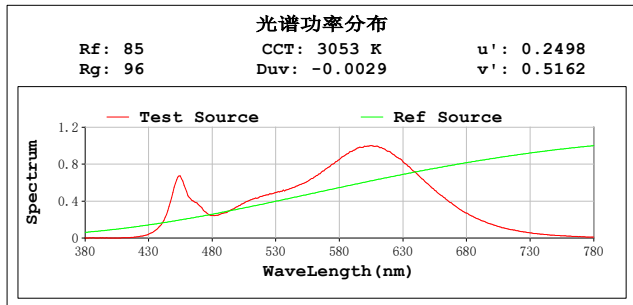
GBT5702

Model:1  
Tester:11  
Temperature:25.3Deg  
Manufacturer:

Number:311  
Date:2025-11-27 09:40:54  
Humidity:65.0%  
Remarks:1

## TM30

视场角:2 度



Model:1  
Tester:11  
Temperature:25.3Deg  
Manufacturer:

Number:311  
Date:2025-11-27 09:40:54  
Humidity:65.0%  
Remarks:1